

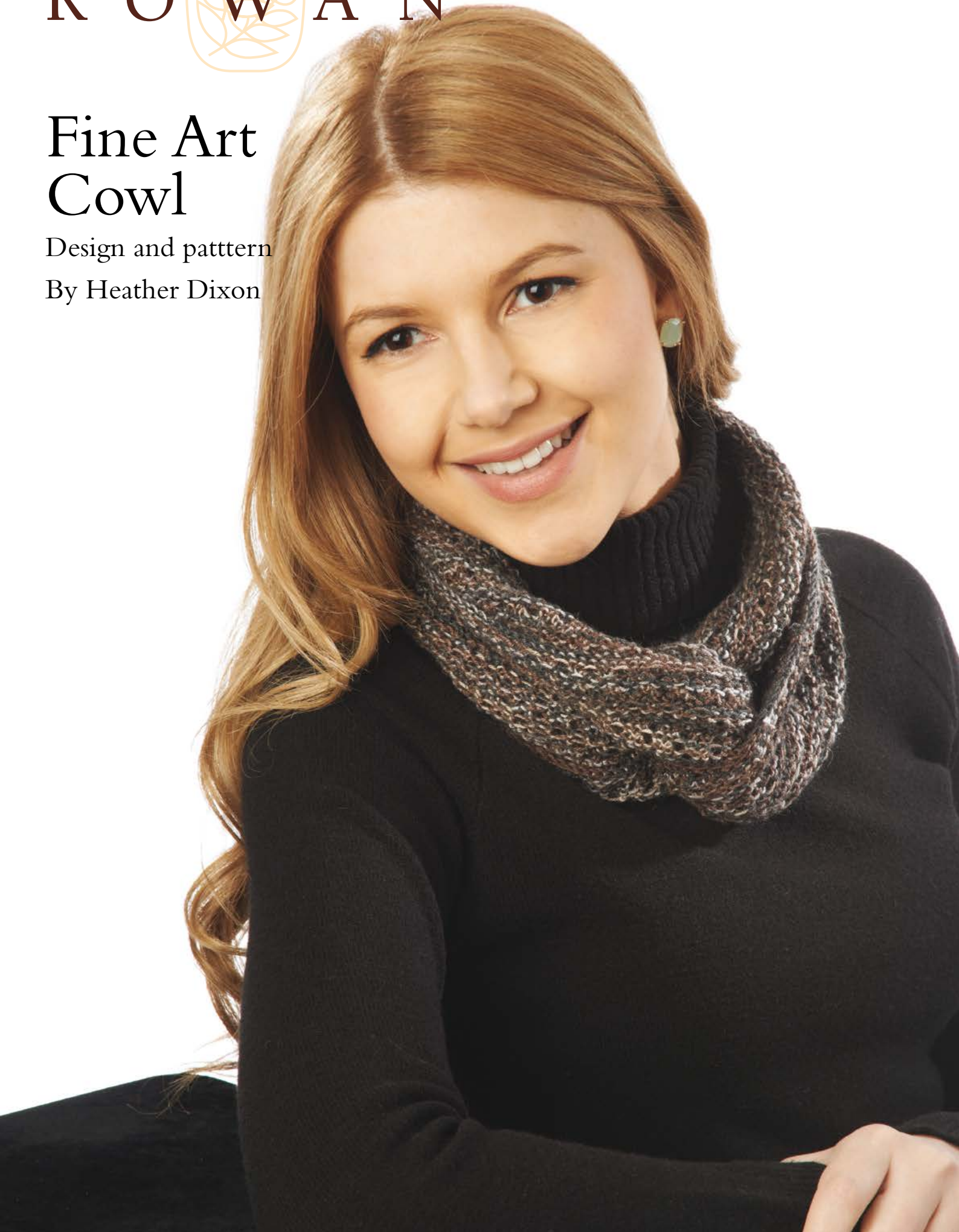
R O W A N



Fine Art Cowl

Design and pattern

By Heather Dixon





Fine Art Cowl

Design and Pattern

by Heather Dixon



Finished Circumference: 51½"/131cm

Finished Height: 7"/18cm

Yarn

Rowan Fine Art (45% Wool, 20% Mohair, 25% Polyamide, 10% Silk), 3.5oz/100g, 437yd/400m

1 Skein of shade 308 Chiff-Chaff.

Needles and Extras

1 US 4/3.5mm 47"/120cm circular needle

1 Stitch Marker

Tapestry/Darning Needle

Tension

19 stitches x 26 rows = 4"/10cm worked in Eyelet Ridge Stitch in the round and US 4/3.5mm knitting needles

Or size needed to obtain tension.

Eyelet Ridge Stitch – multiple of 3 sts

Rnd 1: Knit

Rnd 2: (Yo, k1, k2tog) to end.

Rnd 3: Knit.

Rnd 4: (K2tog, yo, k1) to end.

Rnd 5: Knit.

Rnd 6: Purl.

Rnd 7: (Yo, k1, k2tog) to end.

Rnd 8: Purl.

Rnd 9: (K2tog, yo, k1) to end.

Rnd 10: Purl.

Rep rnds 1 – 10.

Cowl

Using Moebius Cast On method CO 249 sts, place marker.

After casting on make sure your stitches are twisted 360 degrees before starting your first round.

Note: *Each rnd = 2 rings of knitting.*

Work rnds 1 – 10 of Eyelet Ridge Stitch, 4 times.

Rep rnds 1 – 6 once.

Bind Off loosely.

Sew in all loose ends.

Block to size required.